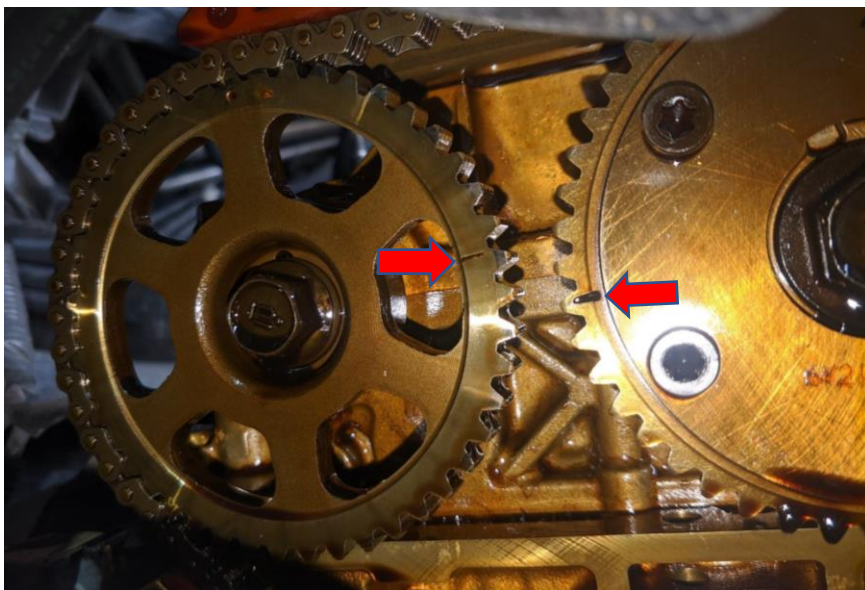


The importance of Routine Maintenance/Vehicle Servicing

Presenting Problem:

Customer noticed their Honda CRV Van was under performing and an engine light appeared on the dash.

Upon inspection it became apparent that the timing chain was excessively worn and had stretched, causing the valve timing to be incorrect and resulting in the camshaft pulleys to be misaligned as seen in picture 1.



(Pic 1: Valve timing incorrect, causing misaligned camshaft pulley's)

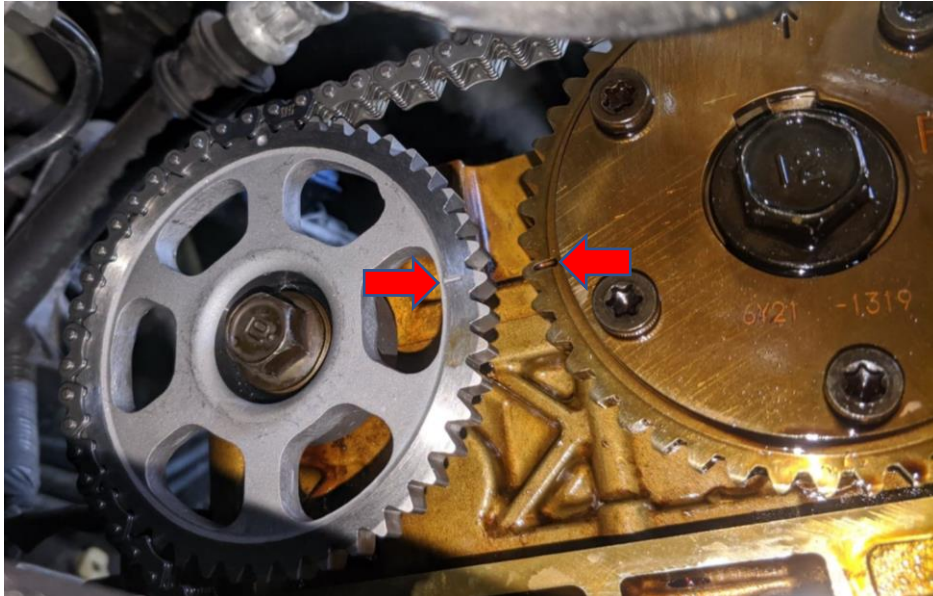
In this case, the mechanic concluded that the chain had stretched due to excessive wear in a short period of time caused by lack of vehicle maintenance/servicing and regular oil changes.

It is imperative that high quality engine oil is used when carrying out vehicle servicing as it works to lubricate the timing chain, camshaft pulleys, and surrounding surfaces so the parts do not wear down and the engine can run smoothly.

When the valve timing is incorrect, this can negatively affect performance of the engine and in extreme cases, cause engine damage which can be awfully expensive to repair.

Solution:

To remedy the presented problem, the mechanic fitted a new camshaft sprocket and timing chain as seen in picture 2.



(Pic 2: New timing chain kit and camshaft sprocket fitted to engine)

You can now see that the camshaft pulley markers in picture 2 align correctly.

When test driven, the engine performance had significantly improved and no engine lights returned after reset.

Conclusion:

Regular vehicle maintenance and servicing can prolong the lifespan of engine parts and avoid unwanted, costly bills!

By Elise Bowley.



**Silverdale
Car Services**
Automotive Service & Repair specialist
www.silverdalecarservices.co.nz TEL:094211413